

CODIS Interface Due Out Before Second Quarter

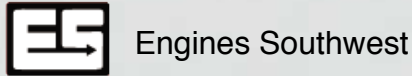
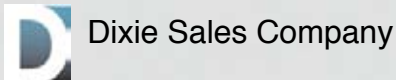
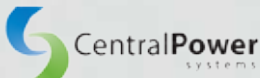
The new CODIS purchase order interface is nearing completion.

Scheduled for deployment by April 1, the interface will streamline the process of ordering from distributors and manufacturers as well as reduce common mistakes.

The interface will allow the user to perform stock inquiries from within the business management system.

We will notify you as interface features become available.

CODIS interfaces with the following distributors:



Inside this Issue

Page 1

CODIS Interface
Social Networking

Page 2

Social Networking (cont.)
Employment
Company

Page 3

Email Statements
Printer Option

Page 4

Email POs
Price Updates

Page 5

Email Statements
Speed Inventory
Underused Features

Follow c-Systems Through Facebook, Twitter

We at c-Systems Software have made it simpler than ever to stay current on product news, the company, promotions and more by joining several popular networking sites.

Now you can receive announcements about new features, software updates and company news on your Twitter

feed or Facebook page. You can also subscribe to our RSS feed and receive our updates through a number of "readers."

Those who have Twitter accounts can "follow" us to have our posts appear on their wall. We publish updates about feature releases and enhancements

continued Page 2

Twitter / csystemsinc

[csystemsinc: RT @NAEDAdealers: Massachusetts equipment dealer Josh Ahearn named to North American Equipment Dealer \(NAEDA\) OPE Dealer Council http:// ...](#)

[csystemsinc: RT @NAEDAdealers: Massachusetts equipment dealer Josh Ahearn named to North American Equipment Dealer \(NAEDA\) OPE Dealer Council http:// ...](#)

[csystemsinc: Josh Ahearn from Ahearn Equipment \(Tractor Guys\) named to North American Equipment Dealer Association](#)

An RSS feed of c-Systems news.

Stay Current On c-Systems With Social Networking

continued...

(like Customer Connect), links to customer success stories and more. We also like to recognize our customers' accolades, as we did recently for two of our customers recognized by a national industry publication.

For those without Twitter accounts, the RSS feed is your best option. Use your favorite reader (for more information, visit the Social Media section of our Web site) and our Twitter

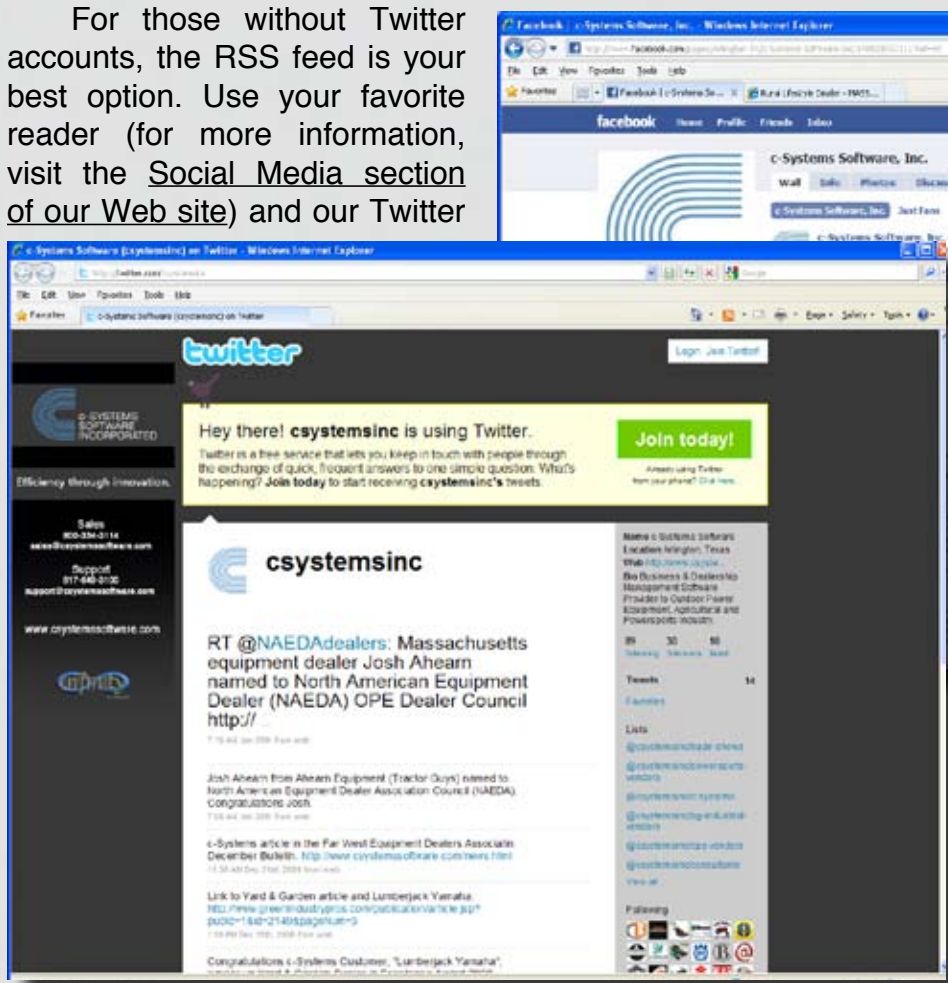
updates will load automatically.

We will update our Facebook page less frequently. We will post fewer text updates, but the page will eventually act as our multi-media center with pictures of trade shows, customers and more, as well as videos and links

to our Web site.

These social networking sites are another example of c-Systems continued integration and use of modern technology to keep our customers informed, efficient and up to date.

[Back to top](#)



Left: Our twitter page delivers the most current news about the company, products and dealers.

Right: Our facebook page allows company news to appear on your wall.

New Hires
Eric Scribner

Anniversaries
 Stan Green - 25 years
 Mark Matthews - 22 years
 Mark Dyess - 16 years
 Tim Moore - 15 years
 Ron Sweat - 13 years
 Kathy Fanning - 9 years
 Fei Wang - 7 years
 Marianne Murphy - 5 years
 Pam Schneider - 5 years

Business Booming at c-Systems

Do you think you have what it takes to be a c-Systems employee?

Business in Texas, and specifically at c-Systems, is great! With a high standard of living and a cost of living among the lowest in the country, Texas is a great place to live and work.

At c-Systems, we are always looking for good people with experience using our business system. If you are looking for a change and think that you might enjoy supporting our systems, please contact Kathie Gentry at kgentry@csystemssoftware.com.

[Back to top](#)

Cut Costs By Emailing Statements

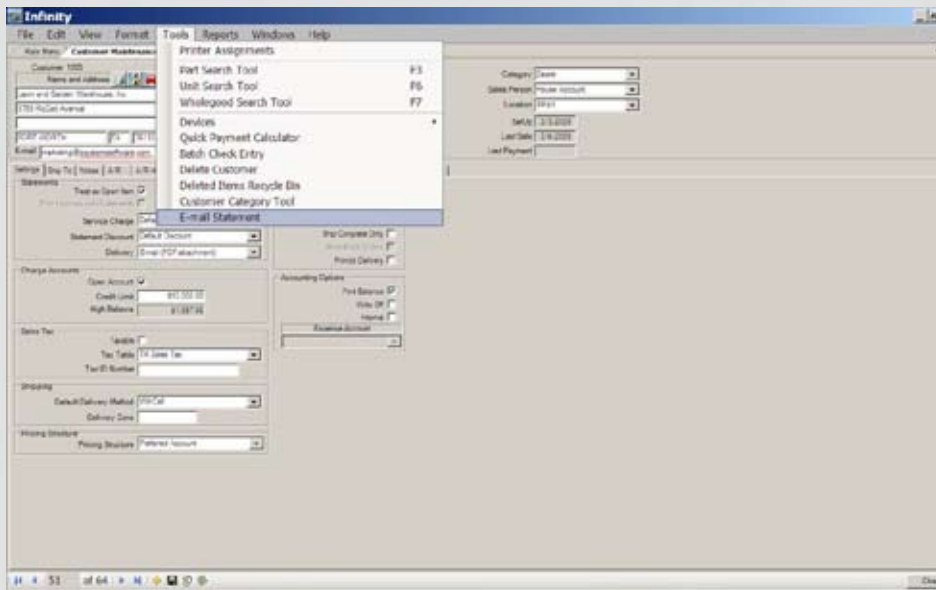
Why waste time with postage fees and envelopes when you can simply point and click?

Save time and money by eliminating the arduous task of mailing statements. Now email your billing statements directly from Infinity.

Infinity's superior technology utilizes a simple, user-friendly, point-and-click approach to handle your customer statements via email.

Infinity gives you a choice to send statements in print form, by email and through Infinity's exclusive "Customer Connect" feature.

[Back to top](#)



Stop printing statements and paying for postage. Simply point and click to email statements.

Print Single Labels, Scan Barcodes

Do you find it frustrating when you want to print just one label?

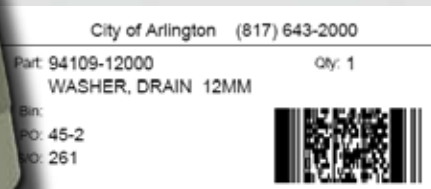
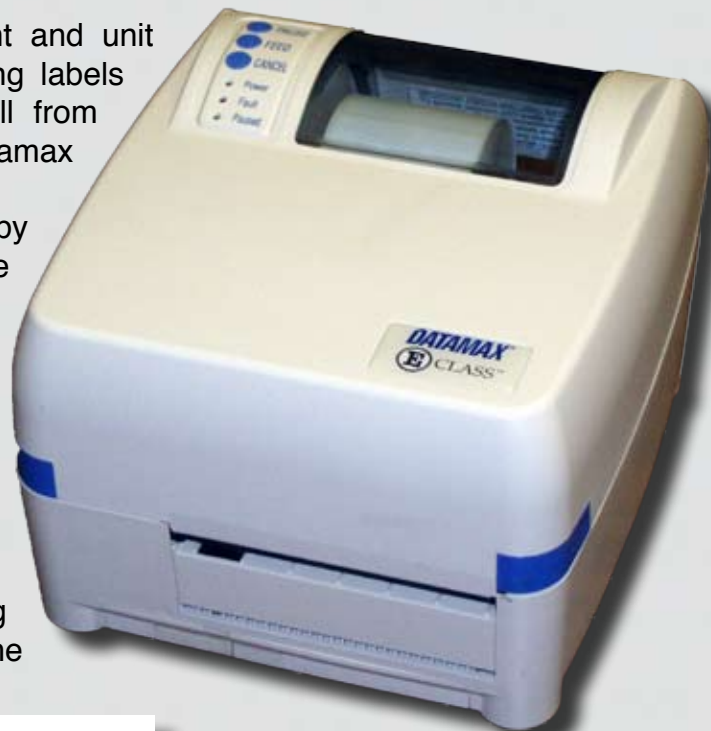
Is it a hassle loading label stock in your printer every time you want to print labels?

Infinity has the solution. An available option is the Datamax dedicated label printer, which uses standard 1.25-inch-by-2.25-inch continuous roll labels (available from c-Systems or specialty forms companies) so you can easily print one label at a time or as many as you wish. No need to switch label paper or interrupt other print jobs just to print labels.

Print your customer labels, barcode part labels,

serialized equipment and unit labels; print receiving labels and much more, all from the dedicated Datamax label printer.

In addition, by adding barcode scan guns with the Datamax printer, you can become even more efficient and eliminate costly mistakes by scanning the labels instead of manually keying information into the system.



[Back to top](#)

Make printing single or bulk labels easy with the Datamax printer. Also print and scan barcodes.

Simplify Purchase Order Emailing Process

We at c-Systems value efficiency above all, which is reflected in our software.

Infinity has always had the ability to email a purchase order to a vendor, but it had been a multi-step process. To simplify the process an email option has been added the list of other available options within the Communications Protocols so transmission by email is the

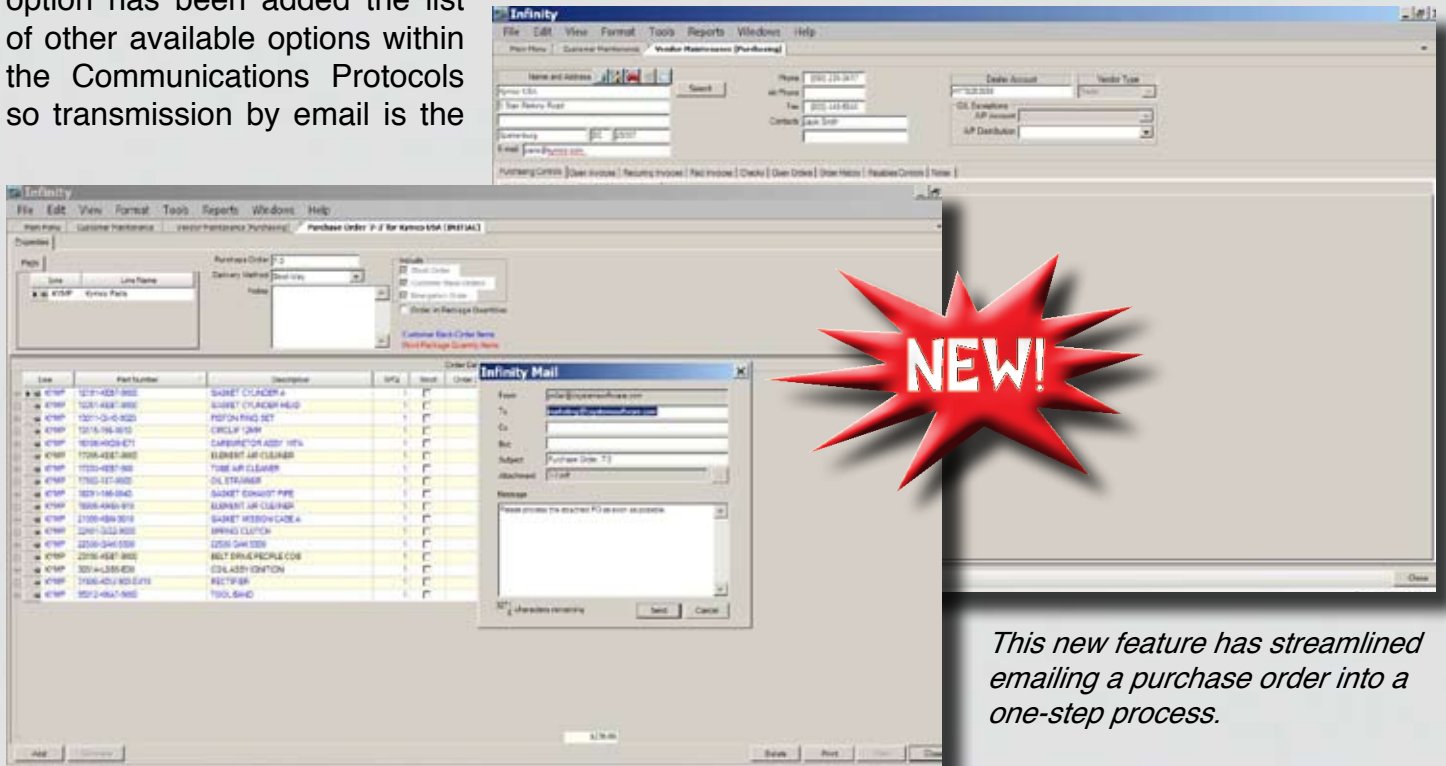
same as any other electronic purchase order transmission.

Open Vendor Maintenance, click on the Purchasing Controls tab then the Vendor Communications tab. Now select Email PO in the drop down list contained within the

Communications Protocol. Next input the Vendors Email address in the appropriate box, save and that's it.

Now an Email will be generated to the particular vendor when the purchase order is posted.

[Back to top](#)



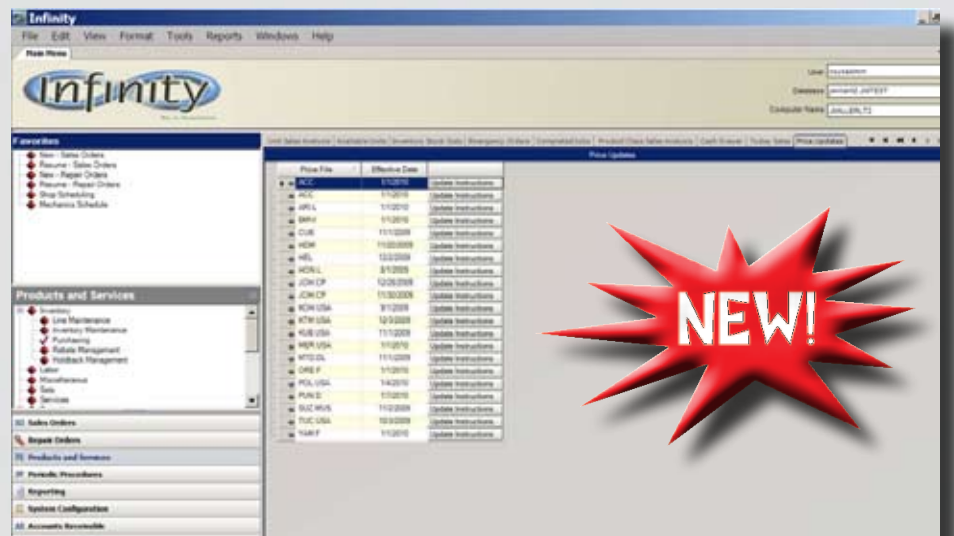
This new feature has streamlined emailing a purchase order into a one-step process.

New Panel Automatically Shows Price Updates

Infinity now displays a Price Updates panel that will eliminate missed price updates and help you maintain your profit margins.

This new panel lists pricing databases that have been updated or added within the last 30 days and automatically becomes the "Default" panel whenever price updates occur. Now, from one screen, you can instantly know when price updates need to be applied.

[Back to top](#)



Coming Soon: Statements Via Email

Start gathering your customers' email addresses now, because the ability to send their accounts receivable statements electronically is coming soon.

Insert your customers' email addresses into the customer file program now to prepare for deployment. Customers can print their statement and return it in a standard No. 9 envelope along with their payment.

Keep an eye on the monthly program update readme files for the official announcement.

[Back to top](#)

TOTAL LANDSCAPE CONCEPTS 2810 ROLLING MEADOWS DRIVE CARROLTON, TX 75006		Statement Date	12/10/09	Account	3590				
				Total	405.87				
				Balance Due	405.87				
				Amount Paid	<input type="text"/>				
YOUR BUSINESS NAME 2201 ARLINGTON DOWNS ROAD ARLINGTON, TX 76011									
Fold Here									
Total Due Last Statement:		0.00	Statement Date	12/10/09	Account 3590				
THIS STATEMENT REFLECTS CREDITS AND CHARGES MADE THROUGH THE STATEMENT DATE INDICATE BEING PAID <input checked="" type="checkbox"/>									
Date	Invoice	Description	Amount	Future	Current	Past 30+	Past 60+	Past 90+	Amount
12/03/09	220565	PURCHASE TC00389	405.87		405.87				405.87
TOTALS			On Account	Future	Current	Past 30+	Past 60+	Past 90+	Total
			405.87	0.00	405.87	0.00	0.00	0.00	405.87
PAY THIS AMOUNT ----->								BALANCE DUE	405.87

Streamline Inventory Process

Updating inventory just got easier.

The new Enterprise ADJUST program is easier and faster to use than its Classic counterpart. Simply select a range of parts and view them on the screen at the same time, making entering inventory count

quick and easy. Click in the correction field on the corresponding part number and key the updated on-hand quantity. When the entries are complete, print a count verification list to confirm the quantities entered are correct.

[Back to top](#)

Item	Line	Part	Bin	LOC	Order Code	Commodity	UOM	SPO	On Hand	New Count
1	300	AM100819		0	A		EA	1	2.0	
2	300	AM101004		0	A		EA	1	1.0	
3	300	AM101191		0	A		EA	1	1.0	
4	300	AM101207		0	A		EA	1	1.0	
5	300	AM101452		0	A		EA	1	1.0	
6	300	AM101481		0	A		EA	1	1.0	
7	300	AM101500		0	A		EA	1	9.0	
8	300	AM101562		0	A		EA	1	1.0	
9	300	AM101602		0	A		EA	1	1.0	
10	300	AM101610		0	A		EA	1	1.0	
11	300	AM101766		0	A		EA	1	1.0	
12	300	AM101812		0	A		EA	1	1.0	
13	300	AM101921		0	A	1	EA	1	1.0	
14	300	AM101937		0	A		EA	1	1.0	
15	300	AM102175		0	A		EA	1	1.0	
16	300	AM102210		0	A		EA	1	1.0	
17	300	AM102256		0	A		EA	1	1.0	
18	300	AM102387		0	A		EA	1	1.0	
19	300	AM102425		0	A	1	EA	1	1.0	
20	300	AM102453		0	A		EA	1	1.0	
21	300	AM102461		0	A		EA	1	1.0	
22	300	AM102543		0	A		EA	1	1.0	
23	300	AM102551		0	A		EA	1	1.0	
24	300	AM102557		0	A		EA	1	1.0	
25	300	AM102605		0	A		EA	1	1.0	
26	300	AM102693		0	A		EA	1	1.0	

Two Underused Enterprise Features

- 1. RGIS Interface:** c-Systems includes programs which are compatible with the RGIS inventory counting system. Inventory information is transferred from c-Systems to RGIS, then back again after the count is complete. Your inventory file is automatically updated with the new on-hand quantities.
- 2. X-Charge:** Instead of running credit and debit cards on a separate system, you can streamline your payment process by adding X-Charge integration to your business system.